

Saddle Ridge \$1,249,000

23487 Saddle Ridge Drive, Rogers MN 55374

4,048 TOTAL FINISHED SQ FT.

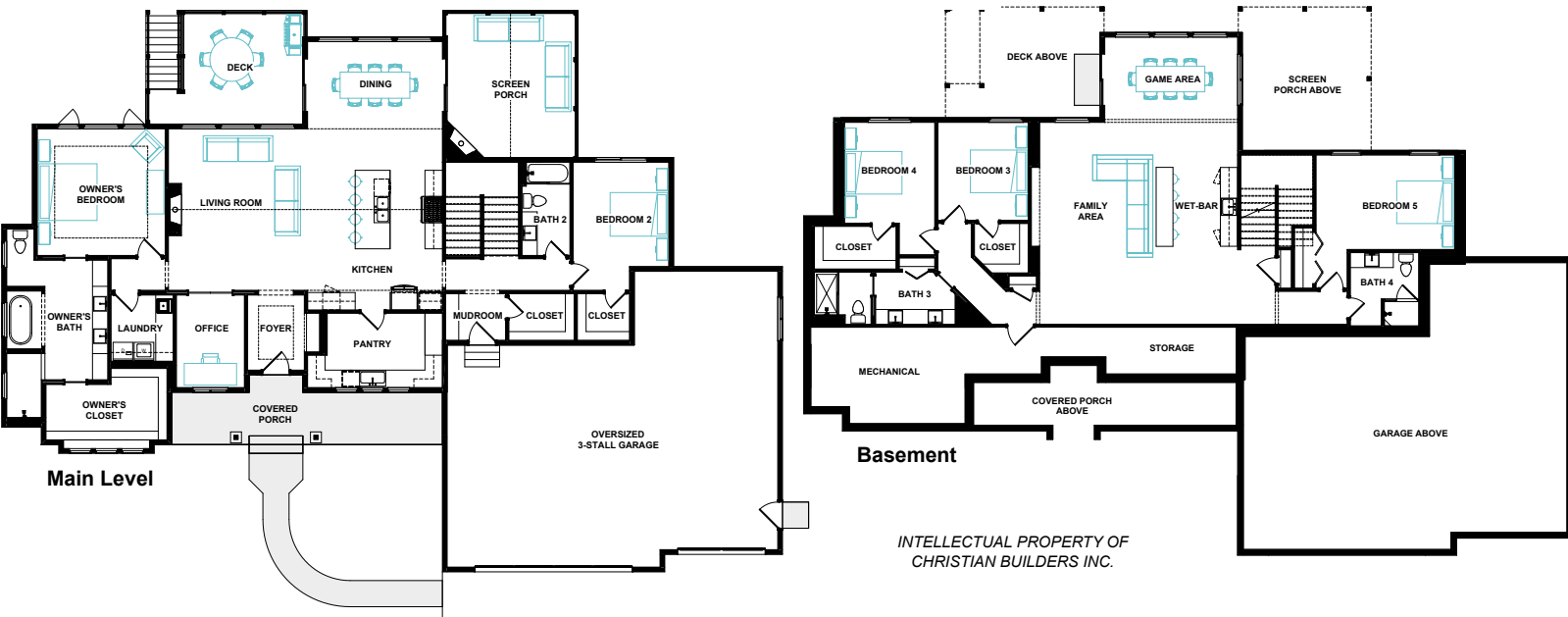
Main Floor: 2,303 Sq. Ft.

Basement: 1,745 Sq. Ft.

Garage: 1,133 Sq. Ft.

DISTINCTIVE FEATURES:

- LP Smartside Siding
- Screen Porch w/ Fireplace
- Composite Deck
- Scullery
- Owners Suite w/ Tub & Shower
- Quartz Countertops
- Custom Cabinetry
- Fireplace
- Finished Basement
- Knockdown Ceilings
- Wet Bar
- Tile Showers
- Oversized Garage
- Asphalt Driveway
- Landscape Package
- Electric Zoned Heating
- Heated Floors in Owners Suite
- Much More



SINCE 1974



CHRISTIAN
BUILDERS & REMODELERS

21000 Rogers Drive, Suite 110, Rogers, MN 55374



763.428.8323

Christianbuilders.com

License # BC1280