

Kirksted II

20818 124th Ave N, Rogers, MN, 55374

3,347 TOTAL FINISHED SQ FT.

Main Floor: 1,933 Sq. Ft.

Basement: 1,414 Sq. Ft.

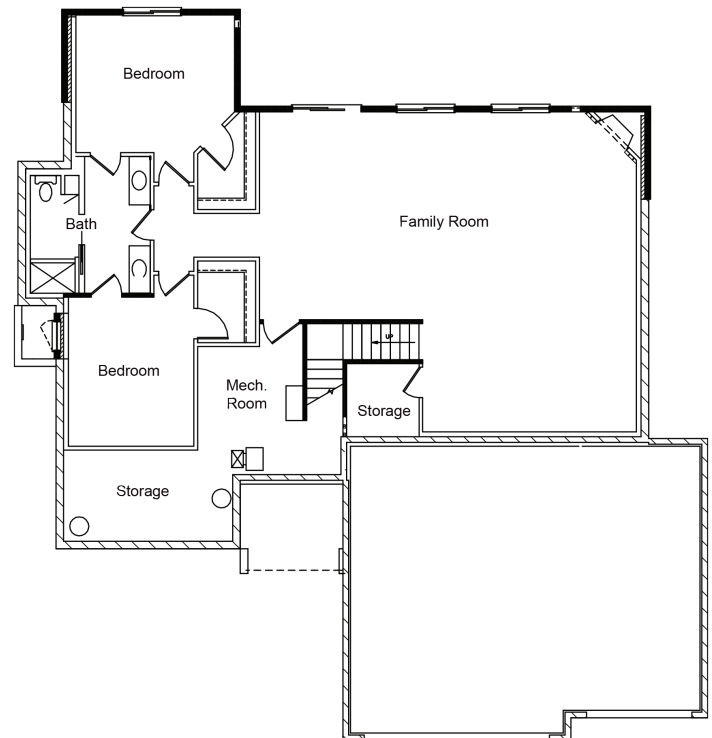
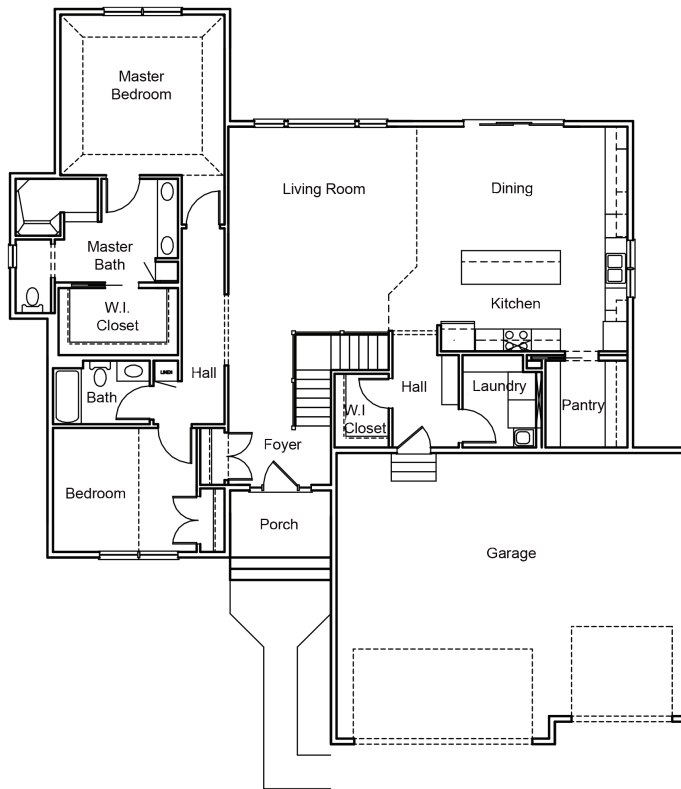
Garage: 809 Sq. Ft.



\$568,500

DISTINCTIVE FEATURES:

- 6" Steel Siding on Front
- Granite Countertops in Kitchen
- Custom Cabinetry with Soft Close Doors & Drawers
- Oversized Millwork
- Fireplace
- Finished Basement
- Knockdown Ceilings
- Ceramic Tile in Master Shower
- Ceramic Walk -in Shower
- Buffet Counter in Dining
- Oversized Garage
- Asfalt Driveway
- \$10,000 Landscape Allowance
- Finished Garage
- Surround Sound
- LVP Floors
- Much More



www.christianbuilders.com



ChristianBuildersRemodelers



CHRISTIAN
BUILDERS & REMODELERS

21000 Rogers Drive
Suite 110
Rogers, MN 55374

763.428.8323
MN LIC #BC001280