

# Martin II

1,776 TOTAL FINISHED SQ FT.

Main Floor: 1,776 Sq. Ft.

Basement: Unfinished

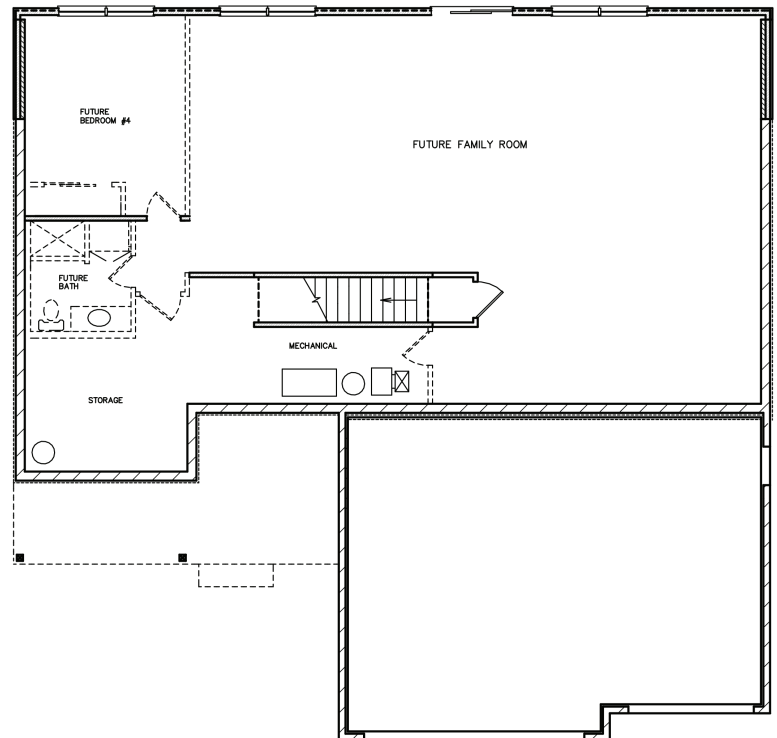
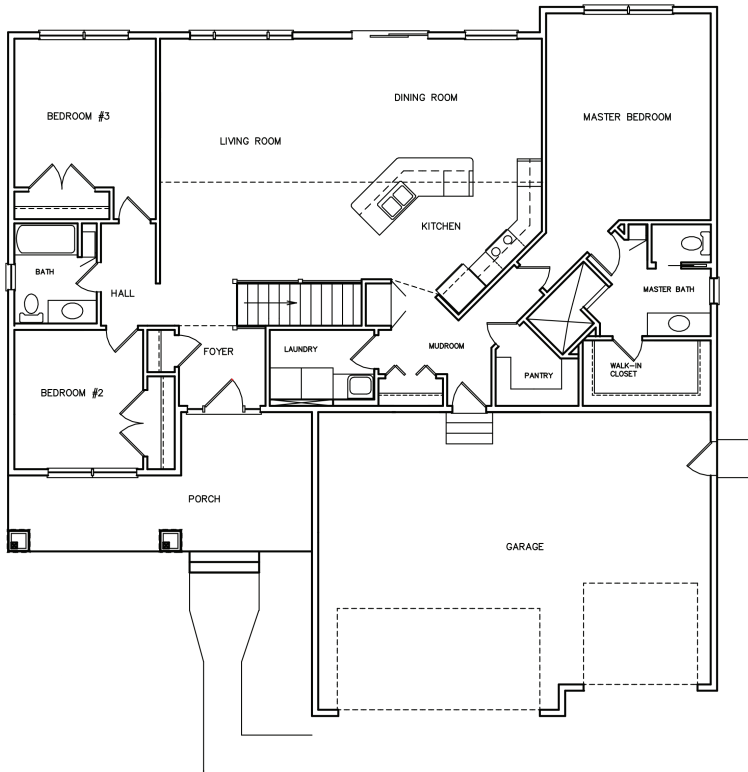
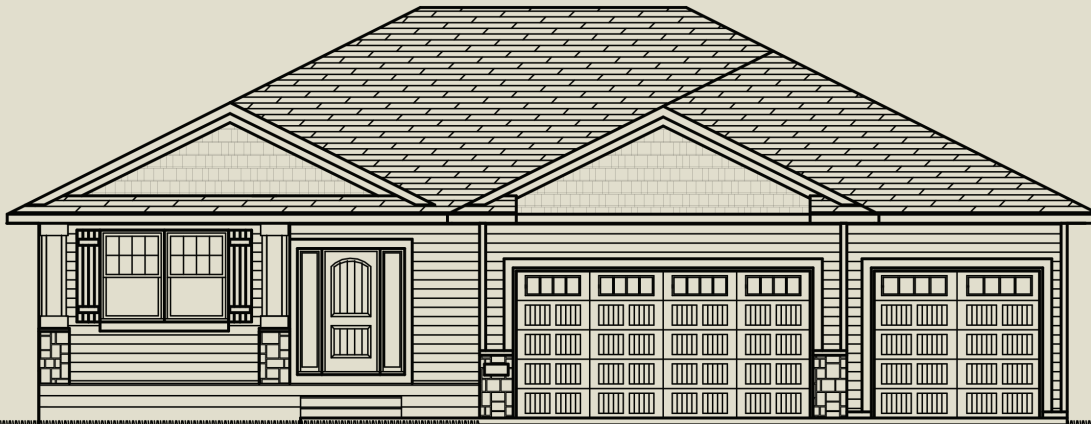
Garage: 744 Sq. Ft.

3 Beds

2 Baths

## DISTINCTIVE FEATURES:

- Custom Cabinetry
- Ceramic Tile Shower
- Vinyl Siding
- Vaulted Ceilings
- LVP Floors
- Fireplace
- Granite Countertops
- Much More



[www.christianbuilders.com](http://www.christianbuilders.com)



ChristianBuildersRemodelers

SINCE 1974



**CHRISTIAN**  
BUILDERS & REMODELERS

21000 Rogers Drive  
Suite 110  
Rogers, MN 55374

763.428.8323  
MN LIC #BC001280